

Animal Bedding

The world standard in animal hygiene, safety and comfort

Animal hygiene and comfort is more important in modern-day cattle and dairy farming than it has ever been before. Keeping animals as contented and healthy as possible is scientifically proven to have a very significant influence on productivity. Over the past twenty-five years, Dunlop Conveyor Belting has built an unrivalled reputation for developing specialist products for the farming community that are widely recognised as being the world standard for durability, hygiene, safety and comfort.

The many key benefits of all our animal bedding include:

- Superior animal comfort and hygiene
- Higher milk yield per animal
- Reduced risk of disease, lameness, thick hocks, teat damage, mastitis etc
- Reduced veterinary, labour and bedding material costs
- Fast return on investment
- Minimum life expectancy of at least ten years



Alanta® Waterbeds

In 1997 Dunlop developed the revolutionary and highly cost-effective Alanta® waterbed, a cow mattress with the essential characteristics of both comfort and hygiene. And with a minimum life expectancy of at least ten years, dairy and cattle farmers all over the world can testify to the cost-effectiveness of Alanta waterbeds.

Superior animal hygiene, comfort and welfare

The bed is seamless and 100% watertight. The risk of cross-infection is minimised because bacteria, moulds and other microscopic organisms cannot penetrate the surface. Using Alanta waterbeds also reduces problems such as lameness, thick hocks, teat damage, mastitis and other kinds of inflammation. Due to its oval shape, moisture, including milk and urine, drains off quickly, reducing the amount of litter that needs to be used compared to other bedding systems. The rubber insulation layers mean that the bedding is dry, warm and comfortable all year round.

Outstanding strength and durability

Alanta waterbeds are produced in accordance with ISO 9001 and are DLG tested. The insulating rubber layers are strengthened with synthetic fabrics to create an extremely strong and hardwearing construction designed to withstand the heaviest of animals and the sharpest of hooves. Each waterbed 'cubicle' is filled with 5cms of water, creating a comfortable bed that is quickly warmed by the cow's body heat.

Simple to install, clean and maintain

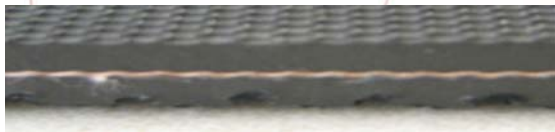
Alanta waterbeds are delivered on a roll (up to a maximum of 210 meters) accompanied by simple-to-follow fitting instructions. They are suitable for both floating cubicles and supports mounted on concrete. The beds are resistant to high-pressure washing, cleaning and disinfecting agents.

The standard waterbed length is 190cm. The water compartment is 90cm X 165cm. They are available from stock in three widths – 110cm, 112.5cm and 115cm. Other sizes for use with bulls or calves etc can be manufactured upon request.

Dunlomat®

Dunlomat rubber matting has been specifically designed for a wide variety of agricultural uses including stall and stable flooring and livestock transportation. The high quality abrasion resistant rubber covers are reinforced by an extremely strong yet flexible carcass of polyester nylon to provide both comfort and durability. The non-skid top and bottom surfaces reduce the risk of injury to legs and udders.

Dunlomat is available in either 10mm or 6mm thicknesses and is supplied in seamless rolls of up to 200 meters in length. It is resistant to high-pressure washing, cleaning and disinfecting agents. Dunlomat has a 'Fabric print' on the top cover for optimal comfort and is easy to clean. The bottom cover has a 'Rufftop print' to prevent slippage..



Dunlomat "10mm" Available in 1000-1200-1500-1600-1700-1800 and 2000 mm widths. Dunlomat "6mm" is available in a width of 2000 mm



Rufftop profile



Fabric Print

Dunlosheet®

Dunlosheet is a hardwearing, thick rubber sheet reinforced with a polyester-nylon fabric primarily designed for use in stables as cover for animal bedding mattresses. It is also excellent for many other protection, anti-slip and anti-static industrial and commercial applications.

Available in thicknesses of both 2.5mm and 3.5mm, Dunlosheet is supplied in seamless rolls of up to 200 meters and in widths up to 2000mm. It has a 'Fabric print' on the top cover, which helps to prevent slippage. The bottom surface is smooth. Dunlosheet is resistant to high-pressure washing, cleaning and disinfecting agents, making it easy to clean and maintain.

Unrivalled technical support and guidance

Our 24-hour Helpline means that we are never more than a phone call away when our customers need our help or advice. This service is extremely well supported by our extensive network of highly reputable Dunlop Authorised Distributors and Approved Agents.

24/7 Helpline: +31 (0) 512 585 555

All data and recommendations in this leaflet have been supplied to the best of our knowledge, as accurately as possible and updated to reflect the most recent technological developments. Some products may have been changed or rendered obsolete in the light of more recent technological developments. We cannot accept any responsibility for recommendations based solely on this leaflet.

DUNLOP CONVEYOR BELTING (Head office) • Oliemolenstraat 2 • PO Box 14 • 9200 AA Drachten • The Netherlands •
Tel.: +31 (0) 512 585 555 • Fax: +31 (0) 512 524 599
POLAND • Tel.: +48 (0) 32 218 5070 • **FRANCE** • Tel.: +33 (0) 13055 3903 • **SPAIN** • Tel.: +34 (0) 93 805 54 46 •
RUSSIA • Tel.: +7 495 7415410 • **ITALY** • Tel.: +39 (0) 363 906266 • **GERMANY** • Tel.: +49 (0) 1729 72 93 02 •
MOROCCO • Tel.: +212 (0) 522 34 65 80/85 •